

This Weweler Bolt-On axle lift is suitable for the BPW SL air suspension range with drum brakes only. (SLO, SLM and SLU) and for the SAF Modul suspension range with drum brakes. Direct assembling (KTL coating).

The Bolt-On axle lift isn't suitable when:

- the suspension system has a stroke of more than 220 mm.
- twin tyres are being used.
- the lifting axle is a steer axle.
- disc brakes are being used.

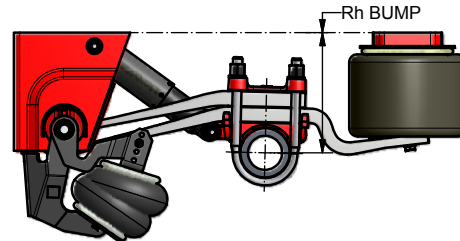
EXPLANATION

- 1 Assemble lefthand and righthand side.
- 2 Recommendation: Position of nut to outside vehicle.
- 3 Groundclearance G at full axle up travel (loaded without pressure) depends on the airsuspensionsystem and the type of tires. (always check)
- 4 General:
The clearance between the road and the tire when the axle is lifted = axle up travel minus deformation of the tires.
- 5 Not lifted: pressure = 0 bar.
- 6 The airspring is not allowed to hit any other parts. Keep a free diameter of 280 mm for moving parts.
- 7 Air-connection (standard 10 mm)
- 8 The position of the rubber support is dependent on the type of suspension system.

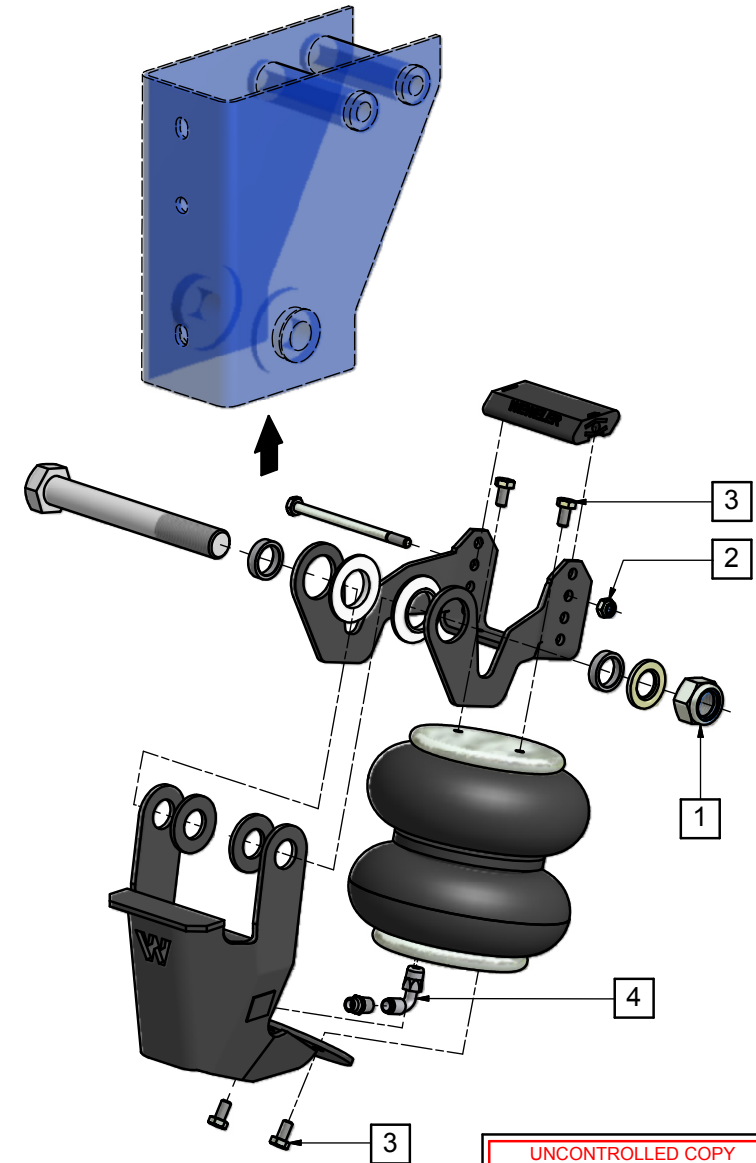
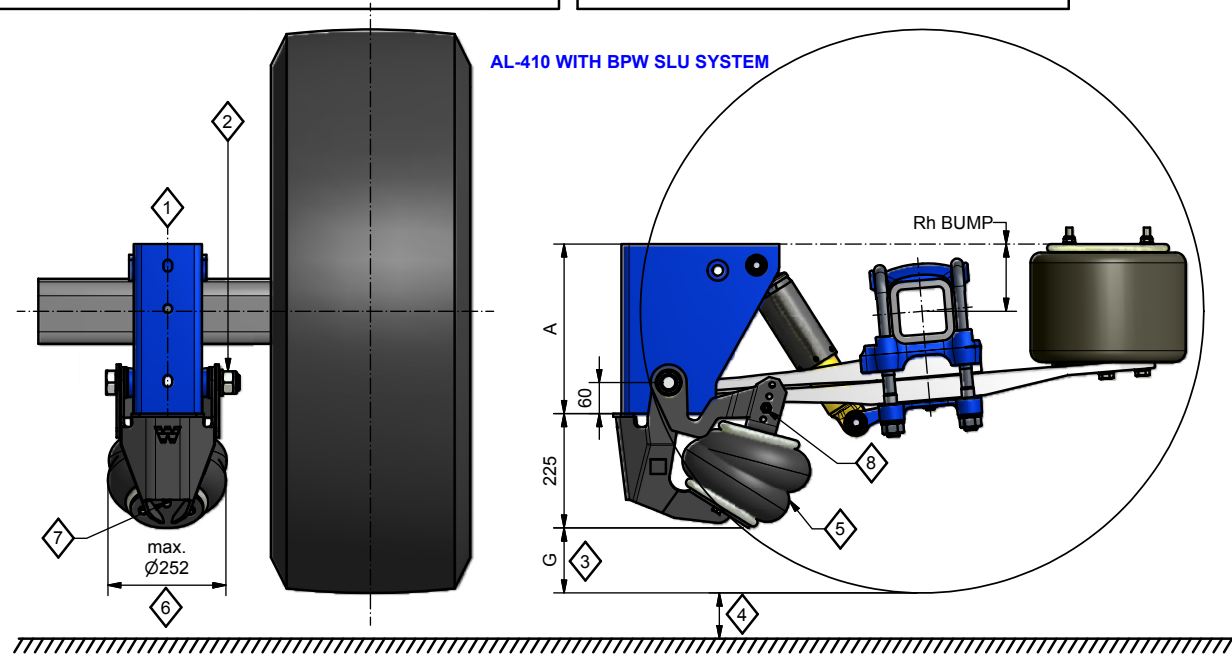
TORQUE

Fastener	Torque [Nm]	Tolerance [Nm]
1 Pivot Bolt	Acc. BPW/SAF	Acc. BPW/SAF
2 Rubber Support	(M10) 50	± 10
3 Air Spring	(M10) 30	± 10
4 Airconnection	(G1/4") 20	± 10

AL-410 WITH SAF MODUL SYSTEM



AL-410 WITH BPW SLU SYSTEM



UNCONTROLLED COPY
NO RIGHTS CAN BE CLAIMED FROM THIS DOCUMENT

THIS DOCUMENT IS PROPERTY OF VDL WEWELER B.V. COPYING, ANNOUNCING, OR GIVE A THIRD PARTY PERUSAL OF ANY KIND, IS PROHIBITED WITHOUT APPROVAL OF OWNER				
VDL Weweler	DATE	BY	APP.	PROJECT:
VDL WEWELER B.V. P.O. BOX 142 7300 AC APELDOORN THE NETHERLANDS	DRAWN 21-2-2006	RTS		
	LAST REV. 8-9-2010	RTS		
	DOC.NR:			REV: