

# AXLE LIFT

# WEWELER - A45 / TWIN WHEELS - DRUM BRAKES

# AL-461-DOC

This Weweler Bolt-On axle lift is developed for Weweler systems with an A25, A36, A45, C25, C36 or C45 hangerbracket with a welded bracing or bolt-on bracing. It is only suitable for drum brake systems. When twin wheels are being used the airspring can be set on the offset position to create enough free space (see drawing). Mega airspring possible for more stroke. Direct assembling (KTL coating).

The Bolt-On lift isn't suitable when:

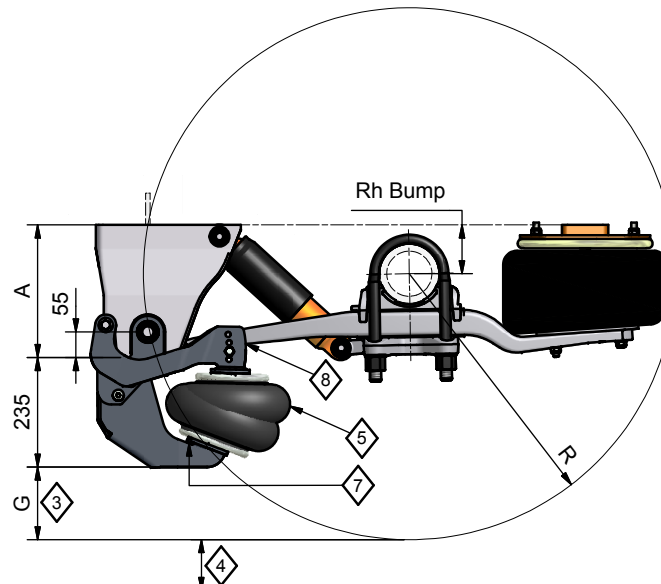
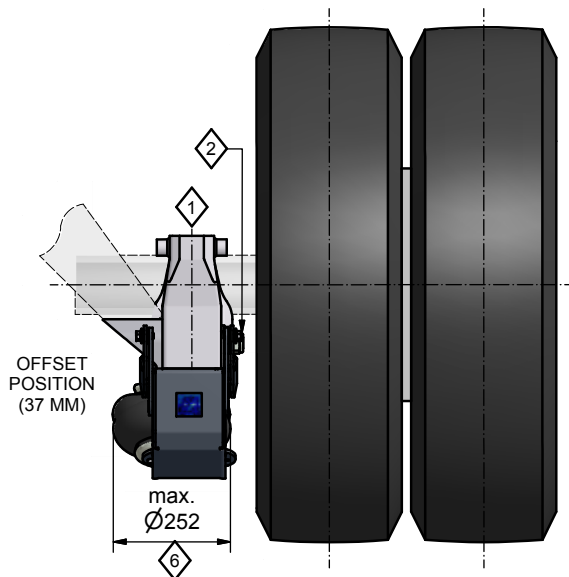
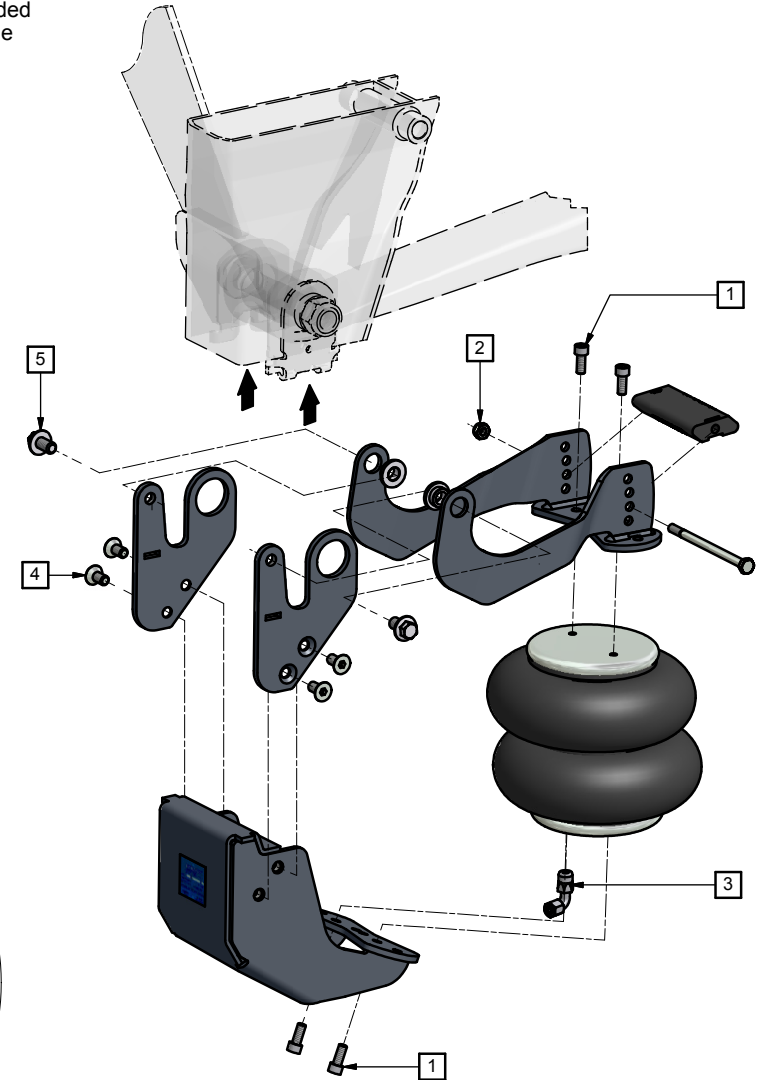
- it concerns a steering axle;
- it concerns a disc brake system;

## EXPLANATION

- 1 Assemble lefthand and right side.
  - 2 Recommendation: Position of nut to outside vehicle.
  - 3 Groundclearance G at full axle up travel (loaded without pressure) depends on the airsuspensionsystem and the type of tires. (always check)
- General:
- 4 The clearance between the road and the tire when the axle is lifted = axle up travel minus deformation of the tires.
  - 5 Not lifted: pressure = 0 bar.
  - 6 The airspring is not allowed to hit any other parts. Keep a free diameter of 280 mm for moving parts.
  - 7 Air-connection (standard 10 mm)
  - 8 The Position of the rubber support is dependent on the type of suspension system, see AL-461-APP for the correct position. For other systems, contact Weweler.

## TORQUE

Fastener	Torque [Nm]	Tolerance [Nm]
1 Airspring	(M10) 30	± 10
2 Rubber Support	(M10) 50	± 10
3 Airconnection	(G1/4") 20	± 10
4 Lift Support	(M12) 80	± 10
5 Pivoting point upper support	(M14) 150	± 10



**UNCONTROLLED COPY**  
NO RIGHTS CAN BE CLAIMED FROM THIS DOCUMENT

THIS DOCUMENT IS PROPERTY OF VDL WEWELER B.V. COPYING, ANNOUNCING, OR GIVE A THIRD PARTY PERUSAL OF ANY KIND, IS PROHIBITED WITHOUT APPROVAL OF OWNER				
<b>VDL Weweler</b>	DATE	BY	APP.	PROJECT:
VDL WEWELER B.V. P.O. BOX 142 7300 AC APELDOORN THE NETHERLANDS	28-6-2007	RTS		WAP06-176
	LAST REV.	RTS		WAP10-044
	DOC.NR:	WE0018393		REV: