

This Weweler Bolt-On axle lift is developed for Weweler systems with an A25, A36, A45, C25, C36 or C45 hangerbracket with a welded bracing. It is suitable for drum brake systems and a few disc brake systems. Mega airspring possible for more stroke. Contact Weweler for precise system configurations.

The Bolt-On lift isn't suitable when:

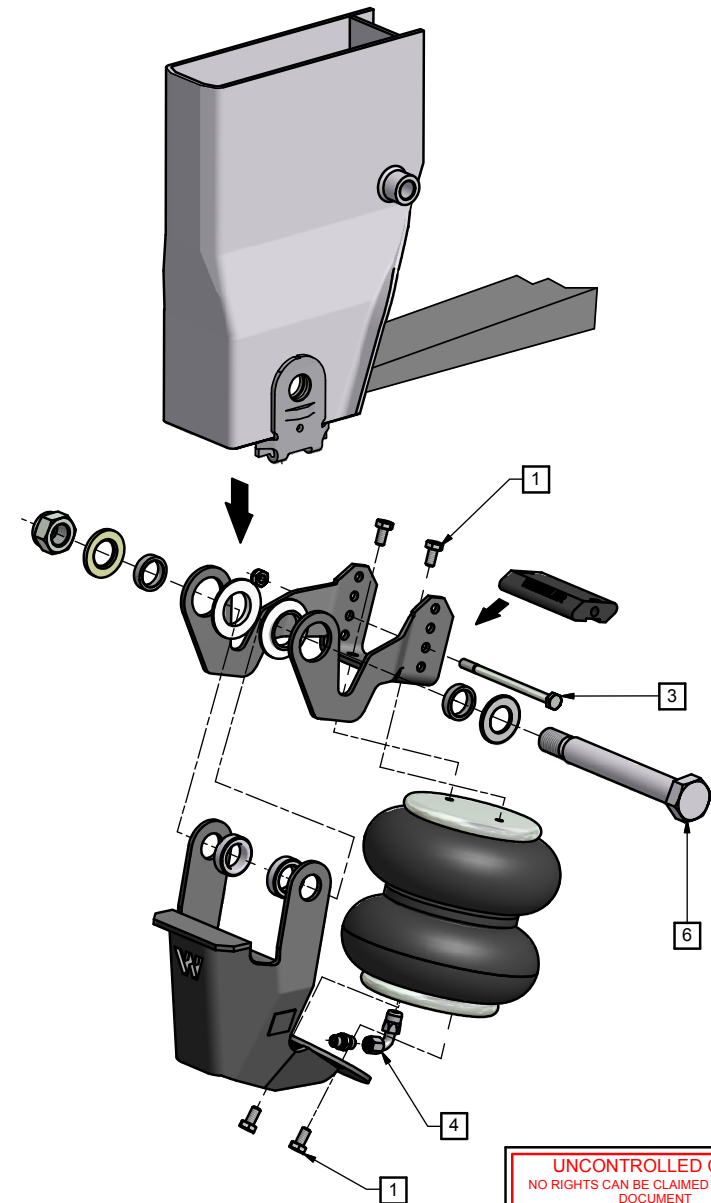
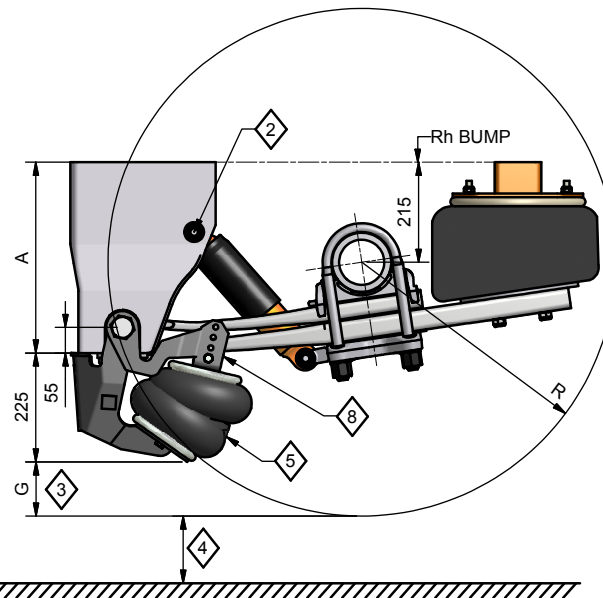
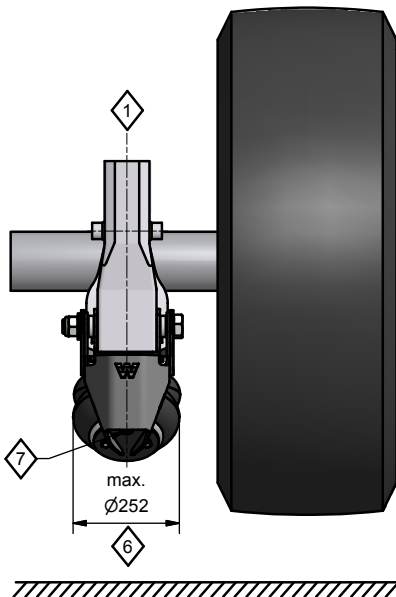
- twin tyres are being used;
- it concerns a steering axle;
- a disc brake axle is being used. In some cases disc brakes are possible, see AL-456-APP for exact systems.

EXPLANATION

- 1 Assemble lefthand and right side.
- 2 Recommendation: Position of nut to outside vehicle.
- 3 Groundclearance G at full axle up travel (loaded without pressure) depends on the airsuspensionsystem and the type of tires. (always check)
- 4 General:
The clearance between the road and the tire when the axle is lifted = axle up travel minus deformation of the tires.
- 5 Not lifted: pressure = 0 bar.
- 6 The airspring is not allowed to hit any other parts. Keep a free diameter of 280 mm for moving parts.
- 7 Air-connection (standard 10 mm)
- 8 The Position of the rubber support is dependent on the type of suspension system, see AL-456-APP for the correct position.

TORQUE

Fastener	Torque [Nm]	Tolerance [Nm]
1 Airspring	(M10) 30	± 10
3 Rubber Support	(M10) 50	± 10
4 Airconnection	(G1/4") 20	± 10
6 Pivot Bolt	(M27) SEE IM-052	



UNCONTROLLED COPY
NO RIGHTS CAN BE CLAIMED FROM THIS DOCUMENT

THIS DOCUMENT IS PROPERTY OF VDL WEWELER B.V. COPYING, ANNOUNCING, OR GIVE A THIRD PARTY PERUSAL OF ANY KIND, IS PROHIBITED WITHOUT APPROVAL OF OWNER				
VDL Weweler	DATE	BY	APP.	PROJECT:
	1-6-2006	RTS		WAP05-117
	LAST REV.	1-9-2010	RTS	WAP10-044
DOC.NR: WE0018386			REV:	
VDL WEWELER B.V. P.O. BOX 142 7300 AC APELDOORN THE NETHERLANDS				